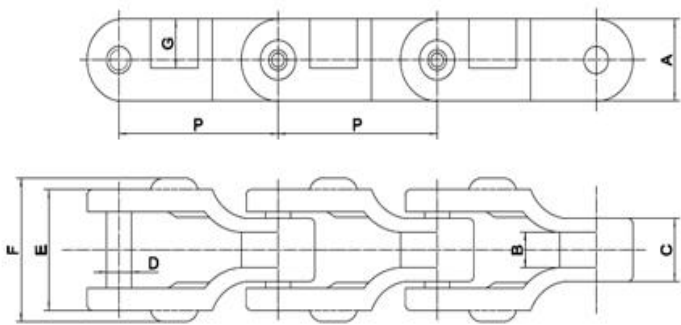
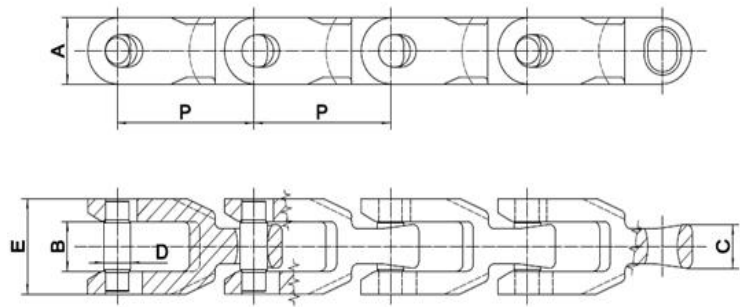


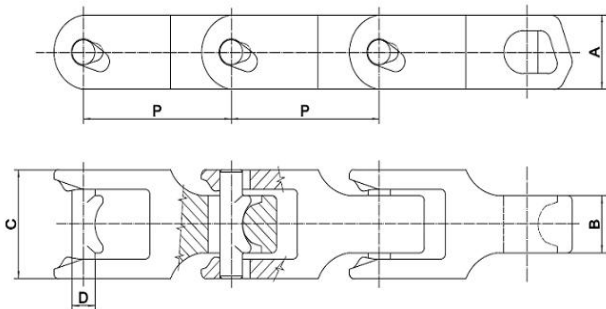
Chain Size	Pitch	Dimensions					Average U.T.S
	P	A	B	C	D	E	
CC600	2.50"	1.18"	0.51"	0.91"	0.44"	1.73"	14600 lbs
	63.5	30	13	23	11.1	44	65KN



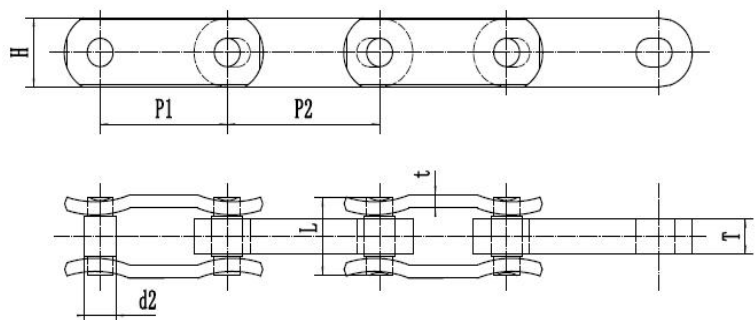
Chain Size	Pitch	Dimensions							Average U.T.S
	P	A	B	C	D	E	F	G	
CC600D	2.50"	1.18"	0.51"	0.91"	0.44"	1.73"	2.13"	0.71"	14600 lbs
	63.5	30	13	23	11.1	44	54	18	65KN



Chain Size	Pitch	Dimensions					Average U.T.S
	P	A	B	C	D	E	
F801	2.73"	1.18"	0.89"	0.83"	0.54"	1.71"	16800 lbs
	69.35	30	22.5	21	13.6	43.5	75KN



Chain Size	Pitch	Dimensions					Average U.T.S
	P	A	B	C	D		
MC33	2.488"	1.26"	0.69"	1.5"	0.47"		11000 lbs
	63.2	32	17.5	38.1	12		49 KN

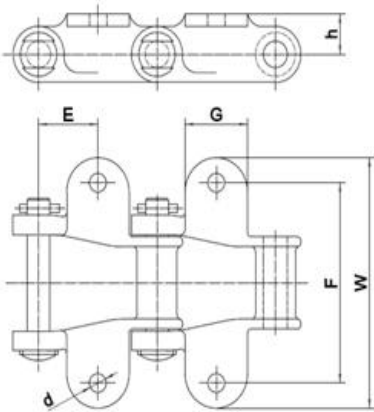


Chain Size	Pitch		Dimensions						Average U.T.S
	P1	P2	H	T	t	d2	L	R	
DF3500	2.5"	3"	1.25"	0.625"	0.25"	0.57"	1.4"	<20"	47250 lbs
	63.5	76.2	31.75	15.88	6.35	14.5	35.5	<508	210KN

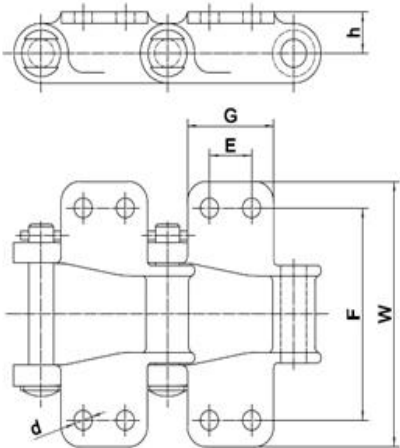
NOTE: Please consult with Camel Convey for requirements for not listed above.

Email: sales@camelconvey.com
www.camelconvey.com

I Series Pintle Chain With K1/K2 Attachment

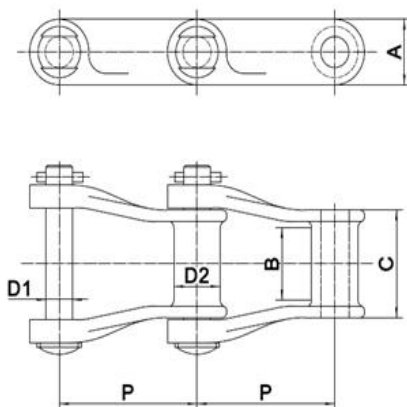


Chain No.	Pitch	Dimensions					
	P	h	G	E	d	F	W
H60	2.308"	0.75"	1.13"	1.06"	0.31"	3"	4"
	58.62mm	19.05mm	28.7mm	26.9mm	7.9mm	76.2mm	101.6mm
H78	2.609"	0.69"	1.13"	1.25"	0.31"	2.88"	3.88"
	66.27mm	17.5mm	28.7mm	31.75mm	7.9mm	73.15mm	98.55mm
H82	3.075"	0.81"	1.38"	1.25"	0.38"	4"	5"
	78.1mm	20.58mm	35mm	31.75mm	9.65mm	101.6mm	127mm
H124	4"	1.19"	2.87"	1.89"	0.38"	5.25"	6.38"
	101.6mm	30.2mm	72.9mm	48mm	9.65mm	133.4mm	162mm



Chain No.	Pitch	Dimensions					
	P	h	G	L	d	F	W
H82	3.075"	0.88"	2.19"	1.31"	0.38"	4.25"	5.5"
	78.1mm	22.35mm	55.6mm	33.3mm	9.65mm	108mm	139.7mm
H124	4"	1.19"	2.88"	1.94"	0.38"	5.25"	6.38"
	101.6mm	30.2mm	73.1mm	49.3mm	9.65mm	133.4mm	162mm

NOTE: Please consult with Camel Convey for requirements for not listed above.



Chain No.	Pitch	Dimensions					Average U.T.S
	P	A	B	C	D1	D2	
H60	2.308"	0.75"	0.75"	1.50"	0.31"	0.75"	7000 lbs
	58.62mm	19.05mm	19.05mm	38.1mm	7.9mm	19.05mm	31 KN
H78	2.609"	1.12"	1.12"	1.88"	0.50"	0.88"	12600 lbs
	66.27mm	28.5mm	28.5mm	47.75mm	12.7mm	22.35mm	56 KN
H82	3.075"	1.25"	1.25"	2.12"	0.56"	1.22"	17000 lbs
	78.1mm	31.75mm	31.75mm	53.8mm	14.2mm	31mm	75.5 KN
H124	4"	1.56"	1.63"	2.75"	0.75"	1.44"	24500 lbs
	101.6mm	39.62mm	41.4mm	69.85mm	19.05mm	36.58mm	109 KN

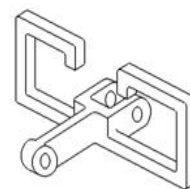
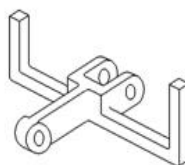
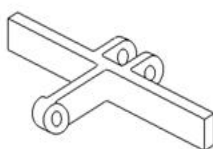
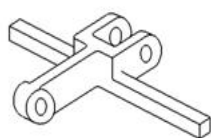


BAR - Flight

T - Flight

U - Flight

OO - Flight



Chain NO.	Pitch	Pin Diameter	Other Dimensions					Ultimate Tensile Strength	
	P	D	C	T	F	R	S	Q (20MnCr5)	Q (42CrMo4)
10160	4"	0.55"	1.42"	0.94"	0.39"	0.235"	0.35"	24700lbs	47200lbs
	101.6mm	14mm	36mm	24mm	10mm	6mm	9mm	110KN	210KN
10160R	4"	0.55"	1.42"	1.18"	0.53"	0.315"	0.51"	40500lbs	74200lbs
	101.6mm	14mm	36mm	30mm	13.5mm	8mm	13mm	180KN	330KN
12514	4.92"	0.63"	1.42"	1.18"	0.63"	0.39"	0.59"	36600lbs	65200lbs
	125mm	16mm	36mm	30mm	16mm	10mm	15mm	163KN	290KN
14218	5.59"	0.98"	1.97"	1.65"	0.81"	0.47"	0.75"	65200lbs	123700lbs
	142mm	25mm	50mm	42mm	20.5mm	12mm	19mm	290KN	550KN
14226	5.59"	0.98"	1.97"	2.44"	1.18"	0.63"	1.12"	99000lbs	177700lbs
	142mm	25mm	50mm	62mm	30mm	16mm	28.5mm	440KN	790KN
16025	6.30"	0.98"	1.97"	1.97"	1.63"	0.55"	0.98"	83200lbs	147300lbs
	160mm	25mm	50mm	50mm	27mm	14mm	25mm	370KN	655KN
20028	7.87"	1.18"	2.36"	2.60"	1.22"	0.79"	1.18"	112500lbs	202500lbs
	200mm	30mm	60mm	66mm	31mm	20mm	30mm	500KN	900KN

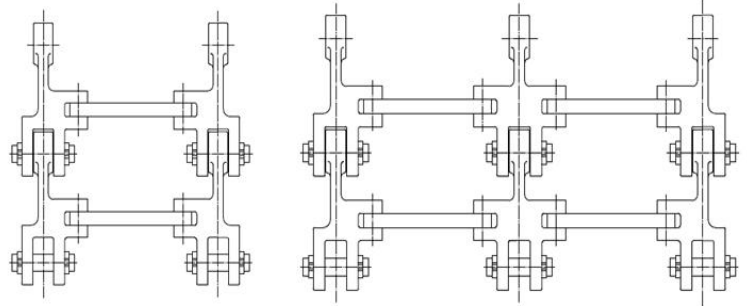
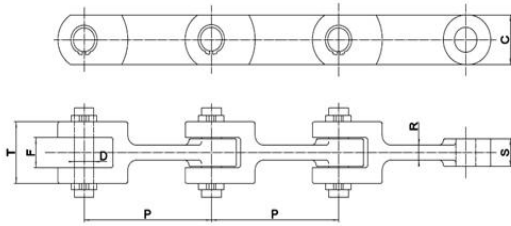
Drop Forged Link Chain



Single Link

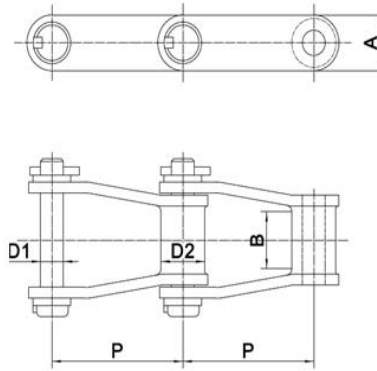
Double Link

Triple Link

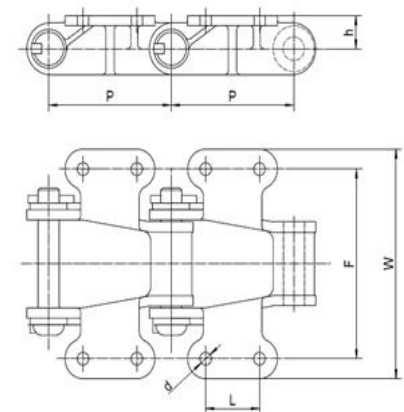
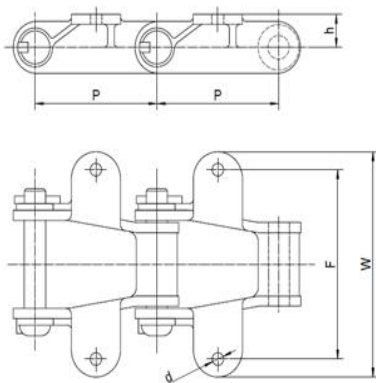


Chain NO.	Pitch	Pin Diameter	Other Dimensions					Ultimate Tensile Strength	
	P	D	C	T	F	R	S	Q (20MnCr5)	Q (42CrMo4)
10160	4"	0.55"	1.42"	0.94"	0.39"	0.235"	0.35"	24700lbs	47200lbs
	101.6mm	14mm	36mm	24mm	10mm	6mm	9mm	110KN	210KN
10160R	4"	0.55"	1.42"	1.18"	0.53"	0.315"	0.51"	40500lbs	74200lbs
	101.6mm	14mm	36mm	30mm	13.5mm	8mm	13mm	180KN	330KN
12514	4.92"	0.63"	1.42"	1.18"	0.63"	0.39"	0.59"	36600lbs	65200lbs
	125mm	16mm	36mm	30mm	16mm	10mm	15mm	163KN	290KN
14218	5.59"	0.98"	1.97"	1.65"	0.81"	0.47"	0.75"	65200lbs	123700lbs
	142mm	25mm	50mm	42mm	20.5mm	12mm	19mm	290KN	550KN
14226	5.59"	0.98"	1.97"	2.44"	1.18"	0.63"	1.12"	99000lbs	177700lbs
	142mm	25mm	50mm	62mm	30mm	16mm	28.5mm	440KN	790KN
16025	6.30"	0.98"	1.97"	1.97"	1.63"	0.55"	0.98"	83200lbs	147300lbs
	160mm	25mm	50mm	50mm	27mm	14mm	25mm	370KN	655KN
20028	7.87"	1.18"	2.36"	2.60"	1.22"	0.79"	1.18"	112500lbs	202500lbs
	200mm	30mm	60mm	66mm	31mm	20mm	30mm	500KN	900KN

400 Class Pintle Chain



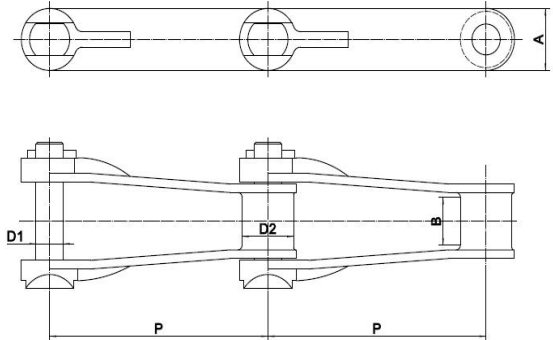
Chain NO.	Pitch	Dimensions			
	P	A	B	D1	D2
442	1.375"	0.75"	0.63"	0.31"	0.56"
	34.92mm	19.05mm	16mm	7.9mm	14.2mm
452	1.506"	0.84"	0.63"	0.38"	0.69"
	38.25mm	21.34mm	16mm	9.65mm	17.5mm
455	1.63"	0.84"	0.69"	0.38"	0.63"
	41.4mm	21.34mm	17.5mm	9.65mm	16mm
462	1.634"	0.94"	0.81"	0.44"	0.72"
	41.5mm	23.9mm	20.6mm	11.2mm	18.3mm
477	2.308"	1"	0.69"	0.44"	0.81"
	58.62mm	25.4mm	17.5mm	11.2mm	20.6mm
488	2.609"	1"	0.75"	0.44"	0.88"
	66.27mm	25.4mm	19.05mm	11.2mm	22.35mm
4103	3.075"	1.50"	1"	0.75"	1.25"
	78.1mm	38.1mm	25.4mm	19.05mm	31.75mm



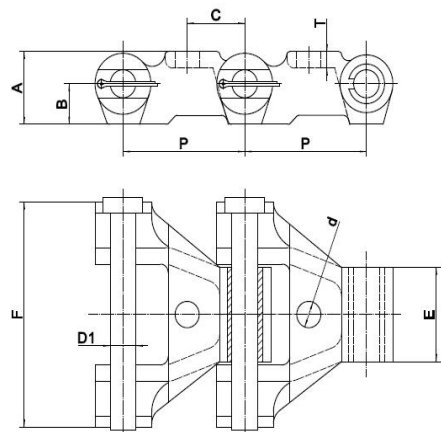
Chain NO.	Pitch	Dimensions				
	P	h	L	d	F	W
488	2.609"	0.68"	1.26"	0.33"	3.64"	4.57"
	66.27mm	17.3mm	32mm	8.5mm	92.5mm	116mm
4103	3.075"	0.89"	1.50"	0.51"	4.13"	5.08"
	78.1mm	22.5mm	38mm	13mm	105mm	129mm

NOTE: Please consult with Camel Convey for requirements for not listed above.

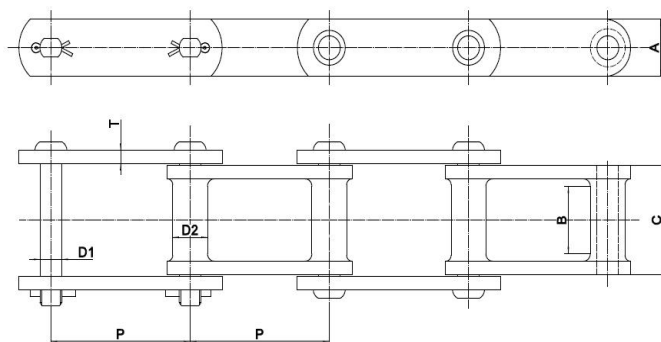
Email: sales@camelconvey.com
www.camelconvey.com



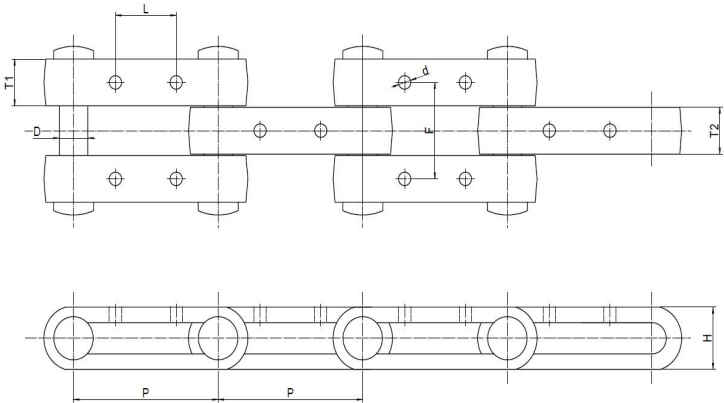
Chain NO.	Pitch	Dimensions				Average U.T.S
	P	A	B	D1	D2	
720S	6"	1.56"	1.13"	0.75"	1.44"	30000 lbs
	152.4mm	39.6mm	28.7mm	19.05mm	36.6mm	133 KN
730	6"	1.75"	1.13"	0.75"	1.5"	30000 lbs
	152.4mm	44.45mm	28.7mm	19.05mm	38.1mm	133 KN



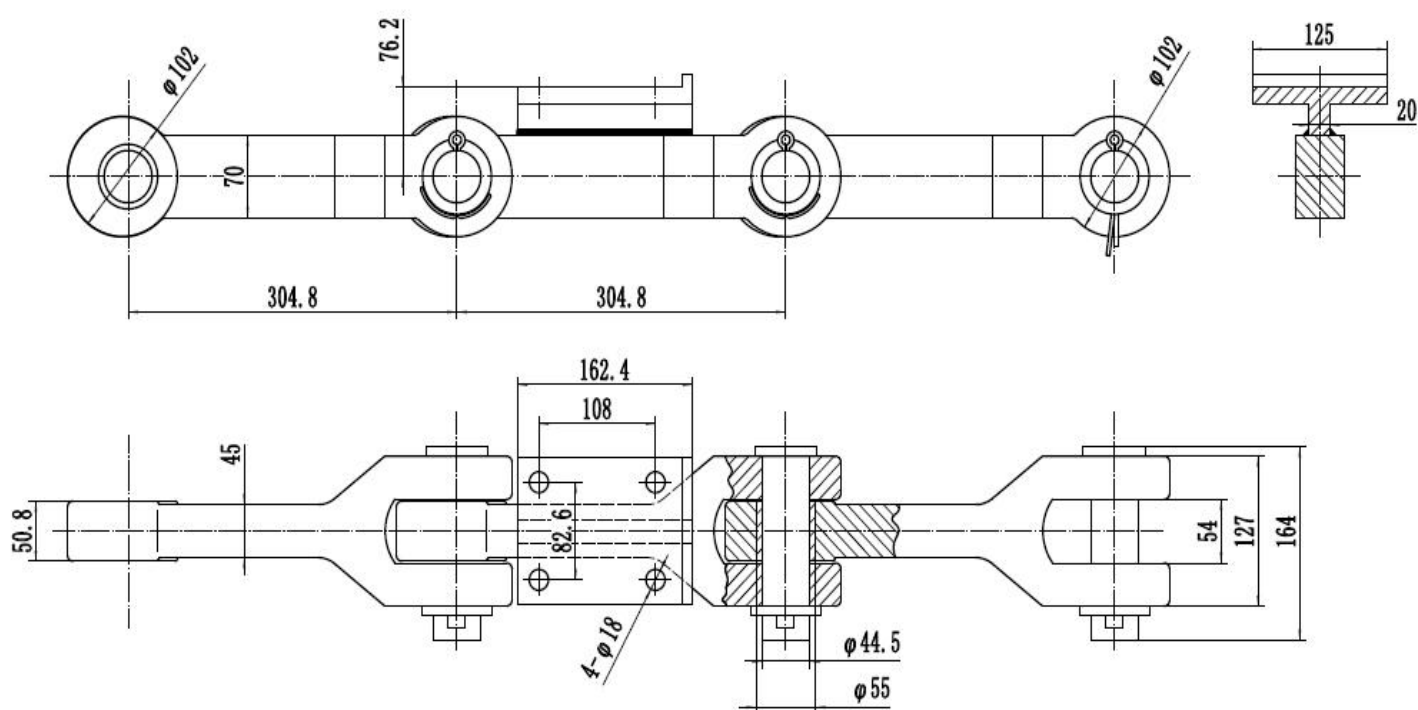
Chain NO.	Pitch	Dimensions							
	P	A	B	C	D1	d	E	F	T
907-E51	3.17"	1.65"	0.94"	1.50"	0.63"	0.63"	2.24"	5.35"	0.38"
	80.5mm	42mm	23.8mm	38.1mm	16mm	16mm	57mm	136mm	9.65mm



Chain Size	Pitch	Dimensions						Average U.T.S
	P	A	B	C	D1	D2	T	
C55	1.631"	0.75"	0.69"	1.26"	0.38"	0.73"	0.197"	10000 lbs
	41.43mm	19.05mm	17.5mm	32mm	9.6mm	18.5mm	5mm	45KN
C102B	4"	1.50"	2"	2.87"	0.63"	1"	0.35"	24000 lbs
	101.6mm	38.1mm	50.8mm	73mm	16mm	25.4mm	9mm	106KN
C131	3.07"	1.50"	1.13"	2.05"	0.63"	1.25"	0.35"	24000 lbs
	78.1mm	38.1mm	28.7mm	52mm	16mm	31.75mm	9mm	106KN
C132	6"	2"	3.13"	4.37"	1"	1.78"	0.47"	50000 lbs
	152.4mm	50.8mm	79.5mm	111mm	25.4mm	45.2mm	12mm	222KN
C188	2.61"	1.13"	0.94"	1.57"	0.50"	0.88"	0.24"	14000 lbs
	66.27mm	28.6mm	23.9mm	39.8mm	12.7mm	22.4mm	6mm	62KN



Chain Number	Pitch	Other Dimensions							Ultimate Tensile Strength
	P	D	F	H	L	T1	T2	d	Q
P152.4	6"	1.18"	3.66"	2.36"	2.52"	1.77"	1.77"	0.51"	76500 lbs
	152.4mm	30mm	93mm	60mm	64mm	45mm	45mm	13mm	340 KN
B5291	6"	1.54"	3.54"	3.15"	3"	1.57"	1.97"	0.67"	141700 lbs
	152.4mm	39mm	90mm	80mm	76.2mm	40mm	50mm	17mm	630 KN
P228.6	9"	1.54"	3.54"	3.15"	3.74"	1.57"	1.97"	0.67"	160600 lbs
	228.6mm	39mm	90mm	80mm	95mm	40mm	50mm	17mm	714 KN

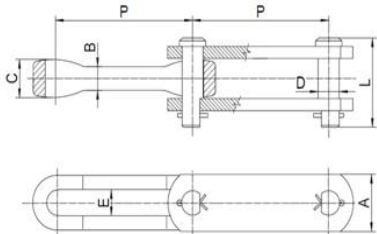
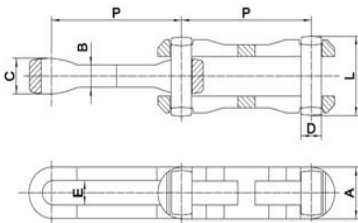
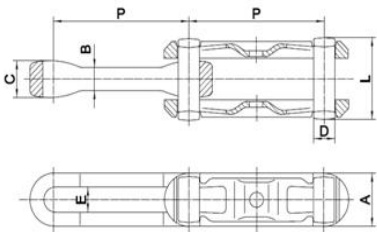




X-Type

Regular-Type

S-Type



Chain NO.	Normal Pitch	Actual Pitch	Pin Diameter	Pin Length	Other Dimensions				Ultimate Tensile Strength
	P		D	L	A	B	C	E	Q
X698	6"	6.03"	1.126"	3.74"	2.54"	1"	1.54"	1.26"	114750lbs
	152.4mm	153.2mm	28.6mm	95mm	64.5mm	25.4mm	39mm	32mm	510KN

NOTE: Please consult with Camel Convey for requirements for not listed above.